

Advanced Math

1-1

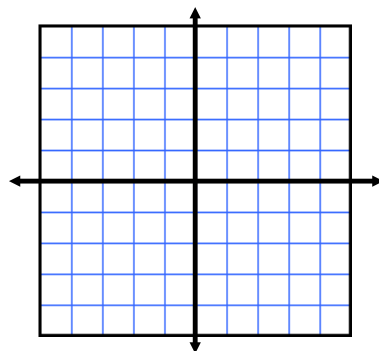
Graphs and Graphing Utilities

Use a graphing utility to graph the equation. Use a standard setting. Find the x - and y -intercepts of the graph.

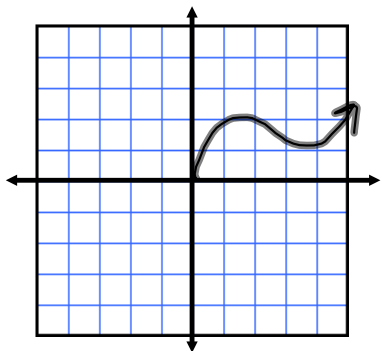
How do you find x - intercepts?

How do you find y - intercepts?

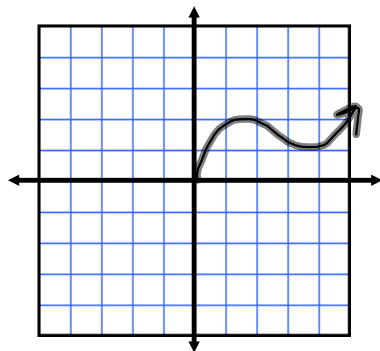
17) $y = x\sqrt{x+6}$



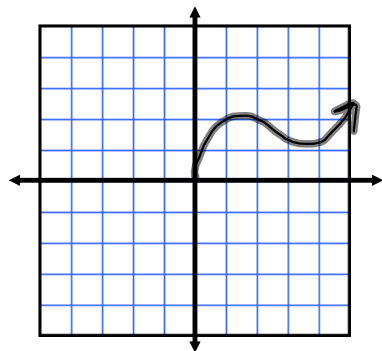
Draw the missing portion of the graph so it has the following:



x -axis symmetry



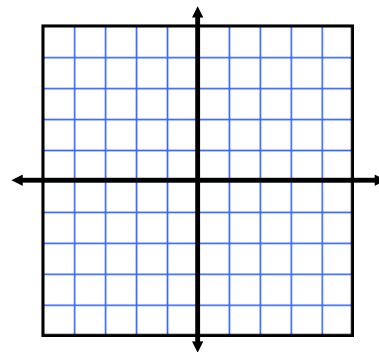
y -axis symmetry



origin symmetry

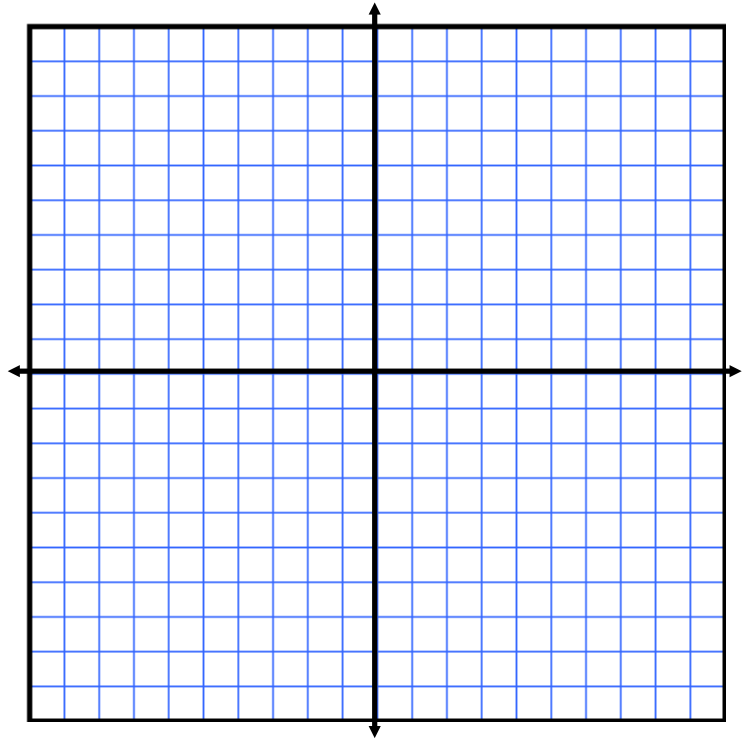
Check for symmetry with respect to each axis and to the origin.

23) $x - y^2 = 0$



Sketch the graph of the equation by point plotting. Test for symmetry.

47) $y = |x - 2|$



Assignment:

Pg. 114

14-28 even,

29-38 all,

40 - 60 even,

Note: 11 graphs